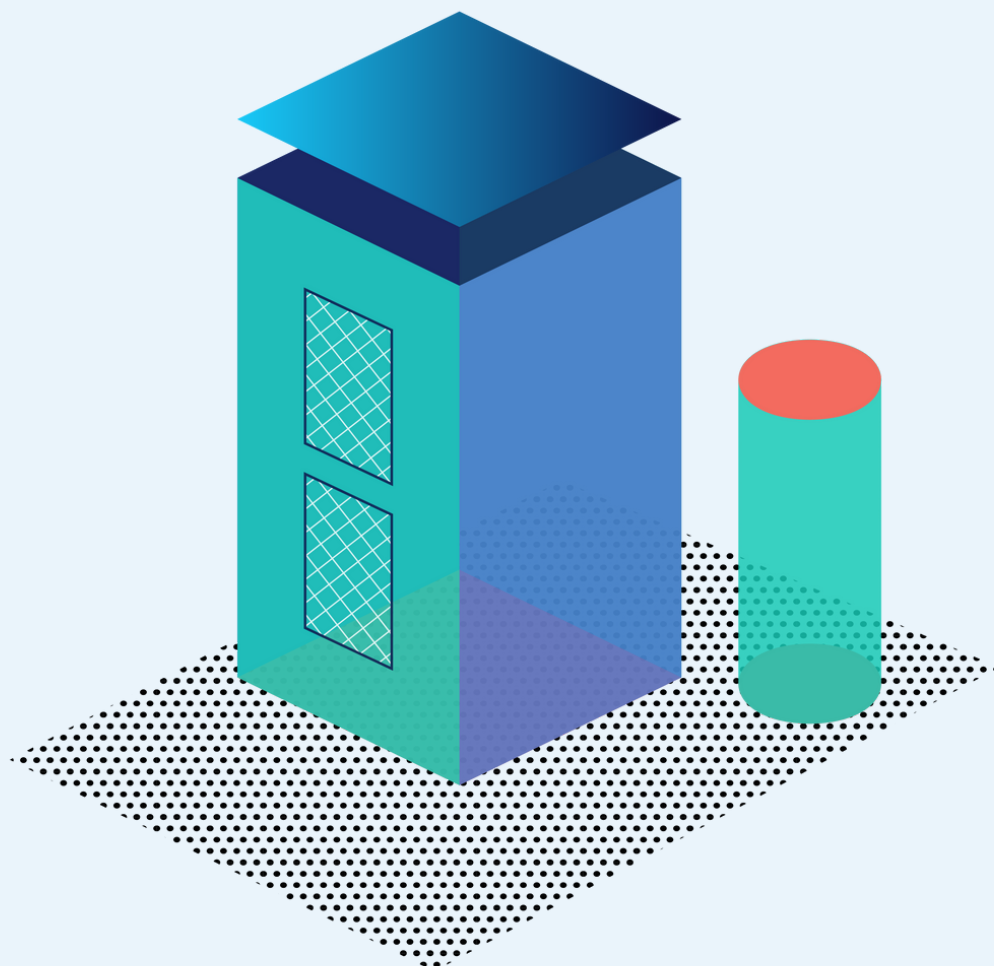




ANNUAL REPORT

2022



DIRECTOR'S STATEMENT

Over the past year, we equipped over 9,000 Christian leaders through 30 trainings at churches, Christian universities, campus ministries, and Christian conferences across the country.

We welcomed two new team members to focus on training parents and pastors to minister to Christian sexual minority women, and Equip continued supporting Blueprint churches who've committed to becoming places where gay people thrive according to a historic sexual ethic.

Equip team members were published in six different premier Christian publications, reaching new audiences. Articles and trainings covered topics like doubt and deconstruction, discipling teenagers with increasing LGBT+ identification, responding to romance idolatry, sexual stewardship for all people, how to parent amidst confusing cultural messages, caring for body shame, and building intentional Christian community.

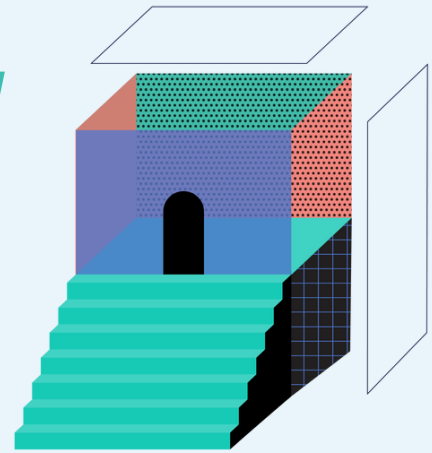
Moreover, we marked a significant milestone of training over 20,000 Christian leaders since Equip began eight years ago.

Flip through this report to learn more about our mission and vision, the impact you made this past year, and financials. Then celebrate with us for all that God has done through your faithful giving and prayer. God delights in the good work of His people. Thank you!



Pieter Valk, LPC
EXECUTIVE DIRECTOR

ABOUT



Our Mission

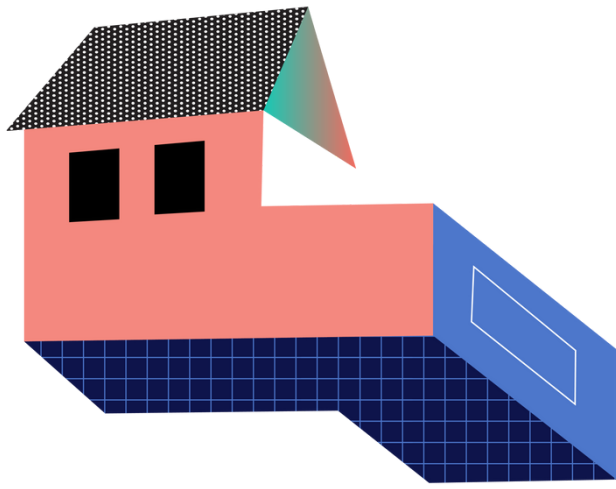
Equip is the premier consulting and training solution for churches aspiring to be places where gay Christians thrive for a lifetime according to a historic sexual ethic.

Our Vision

Beginning with our signature Blueprint Process and continuing with a long-term partnership, we equip churches and Christian leaders to better care for gay people according to a historic sexual ethic and teach everyone about God's love and wisdom for gay people by helping churches and Christian leaders prevent the wounds of the closet, raise the bar for everyone's sexual stewardship, and ensure that vocational singles find lifelong family.

Our Beliefs

God has revealed His good and weighty wisdom for every person's sexual stewardship through the Scriptures and the Church.



MEET THE TEAM



Pieter Valk, LPC
EXECUTIVE DIRECTOR



Amber Carroll
DIRECTOR OF OPERATIONS



Rebecca Hutchinson
LGB WOMEN CONTENT



Jesse White
TRANSGENDER CONTENT



Melissa Hennings
LGB WOMEN CONTENT



2022 IMPACT



9193

people trained



9652

hours of training



30

trainings

Since Equip's inception in 2014, we've trained over **20,000** people across **255** trainings at **75** churches, Christian universities, campus ministries, and Christian organizations.



equip

2022 YEAR IN REVIEW

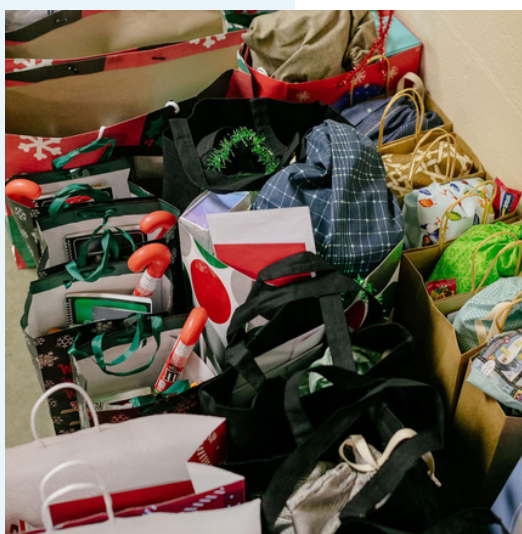
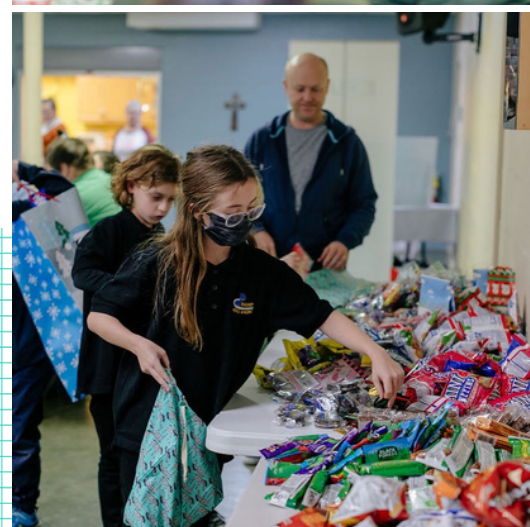
CARE PACKAGES

DECEMBER 2021

Some of the most vulnerable of the LGBT+ community are youth and college students. Though LGBT+ people comprise less than 8% of the total population, more than 40% of homeless youth identify as LGBT+. LGBT+ youth are also 5 times more likely to commit suicide than their straight peers.

These care packages are a small part in a bigger work: we want our churches to become places where gay people can thrive according to a historic sexual ethic. But it's often difficult for many gay people to believe that God loves them because of how they've been treated by Christians. We hope these care packages played a small role in these students' lives over their winter break.

Equip and our volunteers distributed over 75 care packages to LGBT+ youth in Nashville.



EVENTS AND PUBLICATIONS

GOD'S HEART FOR HIS DAUGHTERS



How leaders & parents can better love LGB women

56 pastors and parents participated in a half-day seminar of "God's Heart for His Daughters", created and led by Equip's Lindsey Snyder to help pastors and parents love sexual minority Christian women. Equip webinar, September 2021

Chapel message given by Pieter Valk
Trevecca Nazarene University, October 2021

"How a Deconstructed Evangelical Found
Reconstruction as an Anglican" by Pieter Valk
The Living Church, January 2022

"Disciple the Queer
Generation" by Pieter
Valk
The Center for Faith,
Gender, and Sexuality,
February 2022

"Schitt's Creek Idolizes
Romance" with Pieter
Valk
Pop Culture Catechism
podcast, February 2022





- ▶ Workshop at the Coalition for Christian Outreach Jubilee Conference, February 2022
- ▶ "Distance Makes the Heart Grow Fonder" by Pieter Valk
Lenten devotion in Awaken, March 2022
- ▶ "Reframing Our Sermons on Sexuality" by Pieter Valk
Outreach Magazine, April 2022
- ▶ "Faith, Sexuality, and Mental Health" with Pieter Valk
Oh, Not Another Live Show, April 2022
- ▶ "Should Christian Parents Cancel Their Disney+ Subscription?" with Amber Carroll
Cantus Firmus podcast, May 2022
- ▶ Workshops at the Northstar conference, June 2022

- ▶ "Why the Idol of Romance Doesn't Work for Anyone" with Pieter Valk
LOVEboldly webinar, July 2022
- ▶ "A Pandemic of Romance Idolatry" by Kutter Calloway and Pieter Valk
Christ and Pop Culture, July 2022
- ▶ "Gay Christian Victim Mentality" with Pieter Valk
Rick Lee James podcast, July 2022
- ▶ Virtual workshop led by Pieter Valk
Strong Tower Bible Church, August 2022
- ▶ Parenting talks led by Pieter Valk and Amber Carroll
The Church at West Franklin, September 2022
- ▶ "Til Orientation Do Us Part" by Amber Carroll
She Is Kindred, September 2022
- ▶ "Kids + Gender" with Amber Carroll
Equip webinar, September 2022
- ▶ "Kids + Sexual Stewardship" webinar with Amber Carroll
The Evangelical Covenant Church, October 2022
- ▶ "The Ascetic Fetish" by Pieter Valk
Ekstasis Magazine, October 2022



parent course



182

Parents served through Equip's Parent Course, gender webinar, and other workshops



2,509

Parents served through Equip's Parent Conversation Starters and blog posts for parents

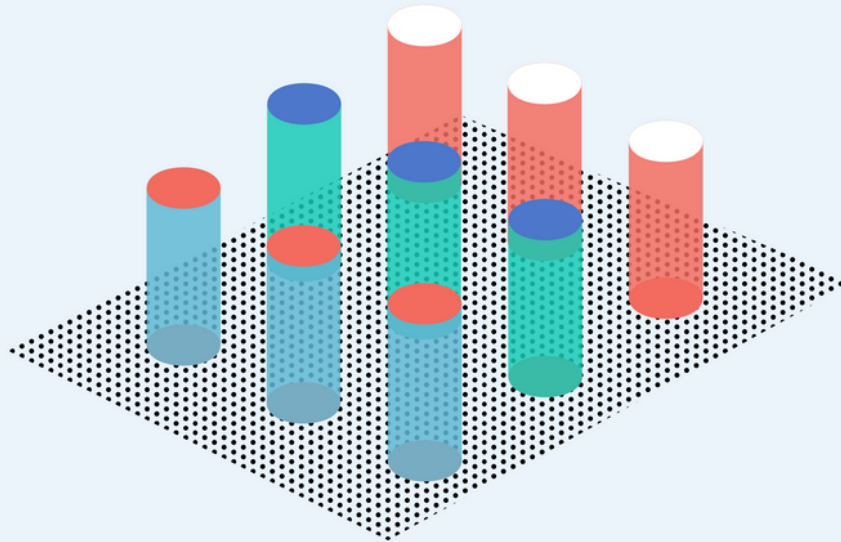


35

Parents served through Equip's free Kids + Sexual Stewardship resource guide

equip
Resource Guide
kids + sexual stewardship

equip blueprint process



We're convinced every church should complete Equip's signature **Blueprint Process**. Parents and teens are asking questions about God's wisdom for sexual stewardship. Deconstruct-ers and not-yet-believers are judging the goodness of God based on how Christians treat gay people. As the premier consulting and training solution for churches aspiring to be places where gay Christians thrive for a lifetime according to a historic sexual ethic, Equip is here to help. Let us leverage decades of personal and professional experience to walk with you, step-by-step.

With ongoing support from Equip, churches have used their **Blueprint** to teach and support lay leaders, parents, teens, and those who experience same-sex attraction in their churches.

Between fall 2018 and spring 2021, Equip led 9 churches through our **Blueprint Process**. To measure the effectiveness of the **Blueprint Process**, we assessed leaders' theological beliefs and pastoral posture across 34 questions before and after to identify the impact of Equip's **Blueprint Process**.

Research over three years and more than 100 responses revealed that every church cohort reported positive growth in their theology of marriage, theology of celibacy, posture/philosophy of LGBT+ care, and theology about LGBT+ topics. The most improvement was observed in theology of celibacy, with still strong improvement in theology about LGBT+ topics and theology of marriage. The results showed greatest confidence that Equip's **Blueprint Process** is what produced the improvement in theology of celibacy.

Our full analysis* discusses why change in belief is a meaningful predictor of church transformation into a place where gay Christians can thrive according to a historic sexual ethic.



*Contact Info@equipyourcommunity.org to request the full analysis.

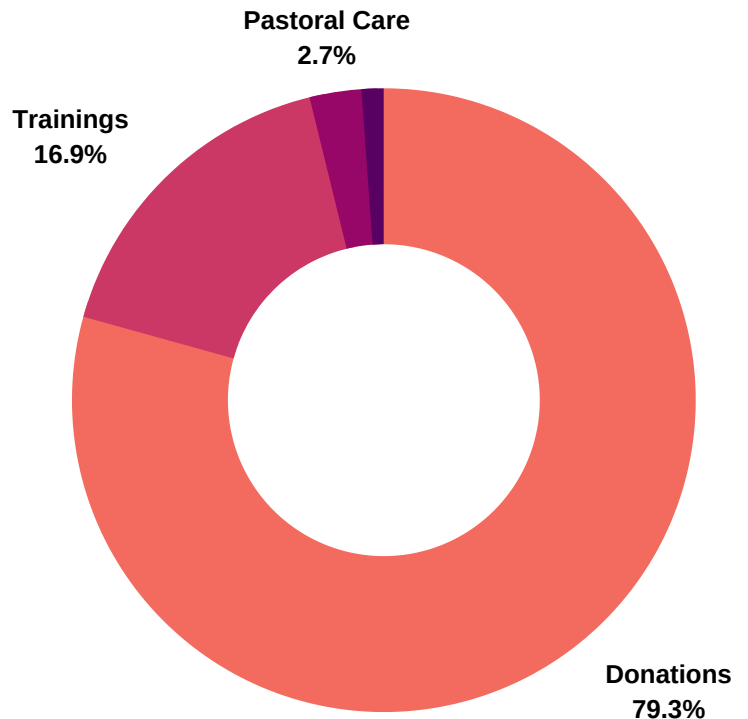
2022 FINANCIALS



Revenue Source

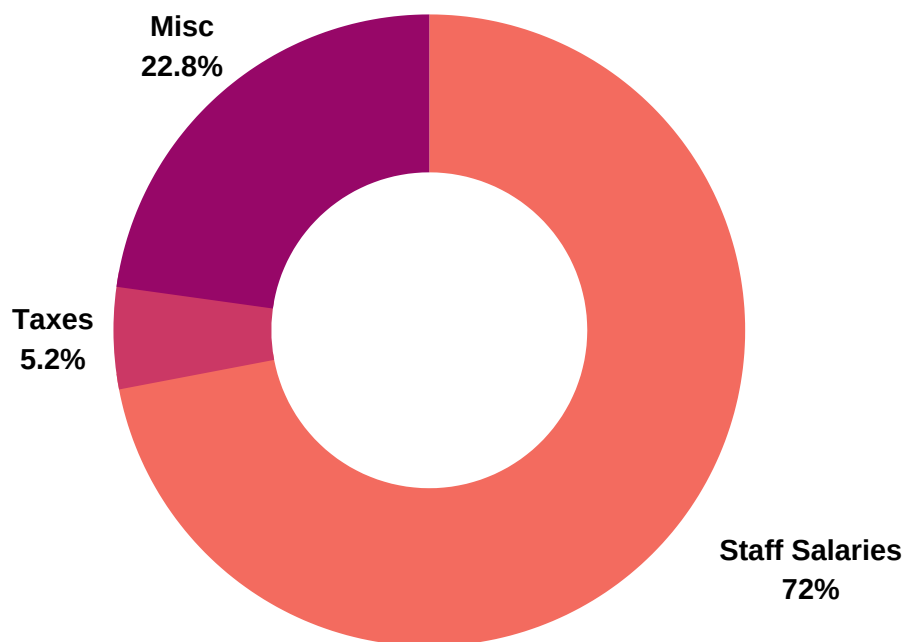
Donations: \$103,401.62
Trainings: \$22,144.97
Pastoral care: \$3,623.25
Virtual course: \$1,750.00

Total: \$130,919.84



Staff salaries: \$90,144.78
Taxes: \$6,896.08
Misc: \$28,837.30

Total: \$125,878.16





GIVE

Help churches become places where gay people thrive according to God's wisdom. We call our monthly donors **Equip Builders** because they are the foundation of our ministry. Give today at equipyourcommunity.org/support.



PRAY

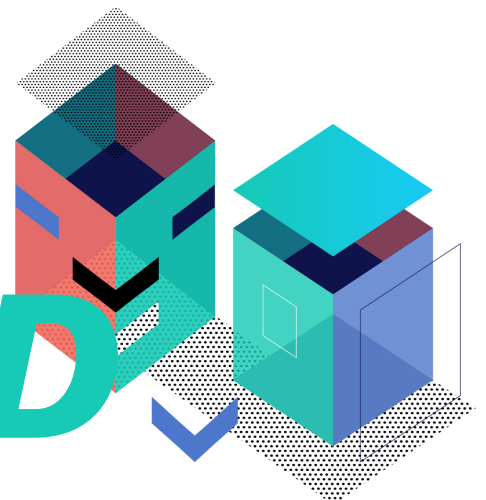
Get monthly prayer requests from Equip about upcoming trainings, development initiatives, and the LGBT+ people we do this work for. Plus, get invites to our quarterly prayer gatherings. Sign up by emailing info@equipyourcommunity.org.



VOLUNTEER

Serve with us to further the mission of Equip and better reflect the love of Jesus to LGBT+ people in our community. Email info@equipyourcommunity.org to let us know you're interested in volunteering.

GET INVOLVED



equip

equipyourcommunity.org